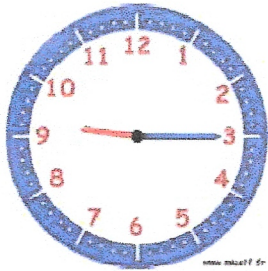
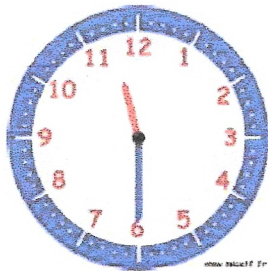


1. Ecris les heures du matin et de l'après-midi pour chaque horloge.



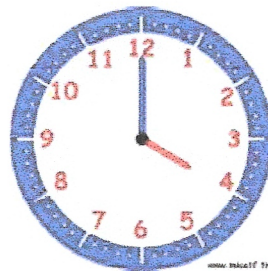
Matin : 9 h 15 min

Après-midi : 21 h 15 min



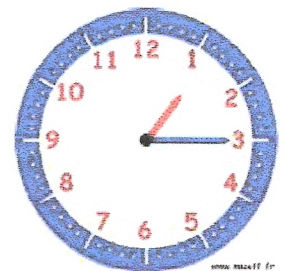
Matin : 11 h 30 min

Après-midi : 23 h 30 min



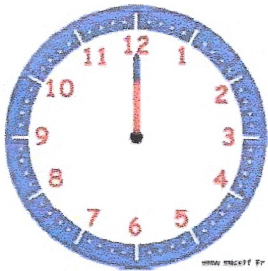
Matin : 4 h 00 min

Après-midi : 16 h 00 min



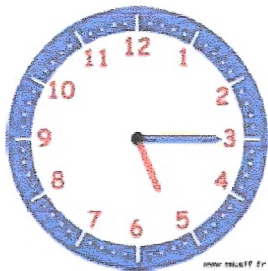
Matin : 1 h 15 min

Après-midi : 13 h 15 min
1h et quart



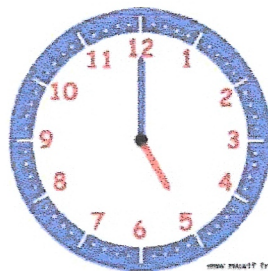
Matin : 12 h 00 min

Après-midi : 0 h 00 min
midi
minuit



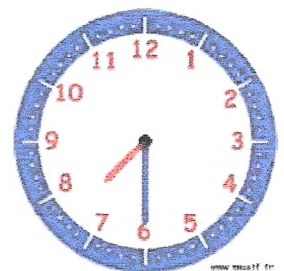
Matin : 5 h 15 min

Après-midi : 17 h 15 min



Matin : 5 h 00 min

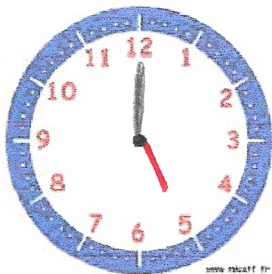
Après-midi : 17 h 00 min



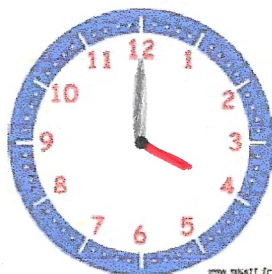
Matin : 7 h 30 min

Après-midi : 19 h 30 min

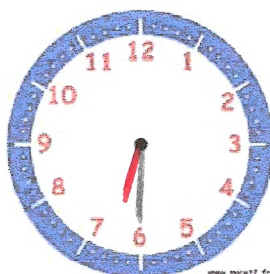
2. Place les aiguilles selon les heures indiquées.



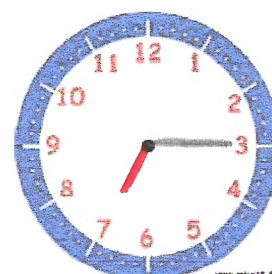
Il est 5 h 00 min.



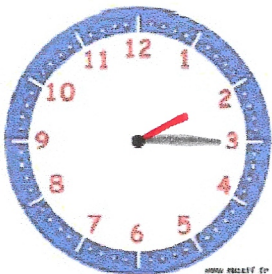
Il est 16 h 00 min.



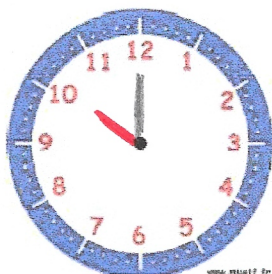
Il est 18 h 30 min.



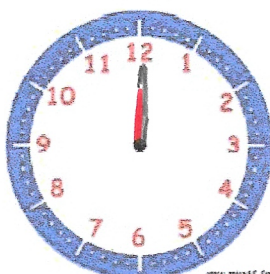
Il est 7 h 15 min.



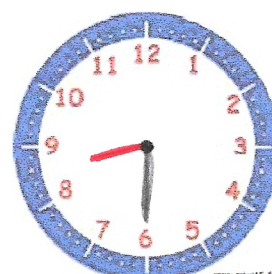
Il est 14 h 15 min.



Il est 22 h 00 min.



Il est 00 h 00 min.



Il est 20 h 30 min.